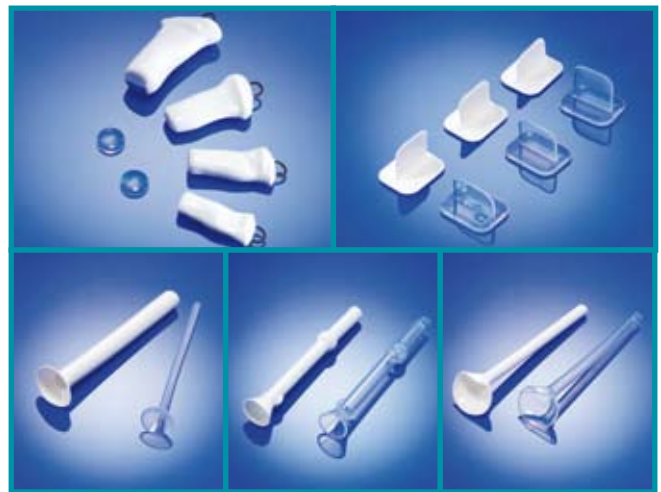


LARYNGEAL AND ESOPHAGEAL PRODUCTS



LARYNGEAL AND ESOPHAGEAL PRODUCTS



Innovation, quality and service that define today's Gold Standards.

The **Montgomery® Laryngeal Stent** is a molded silicone prosthesis designed to conform to the normal endolaryngeal surface. The stent may be utilized as a direct support for intralaryngeal mucosal or dermal grafts to denuded areas of the endolarynx. The **Montgomery® Laryngeal Keel**, with its unique umbrella shape, has proven useful in the repair of anterior subglottic stenosis (web), with or without vocal cord paralysis.

Use of the **Montgomery® Salivary Bypass Tube** following surgery has successfully prevented fistulae occurrence, as well as repair of existing cervical esophageal and hypopharyngeal fistulae. The unique superior funnel shape of the **Har-EI Pharyngeal Tube** is designed for anchoring at the level of the tongue base. The **Montgomery® Esophageal Tube** is used to bridge the gap between the pharyngostome and esophagostome following laryngoesophagectomy and first stage reconstruction of the cervical esophagus.



*from physicians
for physicians*

*William W. Montgomery, M.D.
1923 - 2003*

LARYNGEAL AND ESOPHAGEAL PRODUCTS



MONTGOMERY® LARYNGEAL STENT

Description

The Montgomery® Laryngeal Stent is a molded silicone prosthesis designed to conform to the normal endolaryngeal surface. The stent is constructed of radiopaque implant grade silicone that is firm enough to support the endolarynx postoperatively, yet is soft and flexible enough to ensure a conforming fit while minimizing injury to soft tissues.

The stent may be utilized as a direct support for intralaryngeal mucosal or dermal grafts to denuded areas of the endolarynx. Each Montgomery® Laryngeal Stent includes two silicone suture buttons to support the stent externally.

Indications for use

For the prevention and treatment of laryngeal stenosis when the glottic stenosis involves the midglottis, posterior glottis, supraglottis, and subglottis, singularly or in combination.

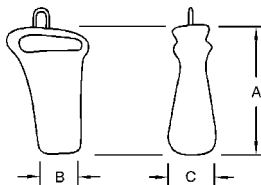
Supplied

Sterile
1 stent, 2 suture buttons



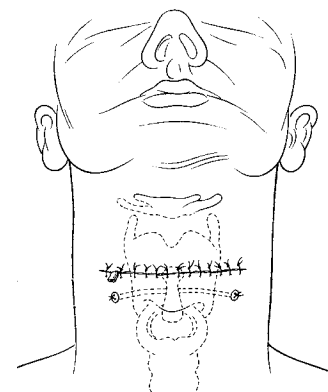
FEATURES

- Implant grade silicone
- Non-adherent smooth surface
- Integral removal loop
- Radiopaque material



Dimensions, Product Codes, & Accessories

SIZE	REF	Dimensions (mm)			REF
		A	B	C	
Child	323010	33	10	9	323011
Small Adult	323020	37	10	11	323011
Medium Adult	323025	40	12	10	323011
Large Adult	323030	47	15	16	323011



LARYNGEAL AND ESOPHAGEAL PRODUCTS



MONTGOMERY® LARYNGEAL KEEL

Description

The Montgomery® Laryngeal Keel, with its unique umbrella shape, has proven useful in the repair of anterior subglottic stenosis (web), with or without vocal cord paralysis. Use of the keel can be made following repair of stenosis or following removal of the Montgomery® Laryngeal Stent to aid in formation of a sharp anterior commissure.

The keel also has application following hemilaryngectomy to prevent stenosis. The intralaryngeal extension of the keel is thinner than the umbrella of the extralaryngeal portion. The extralaryngeal portion, when secured to thyroid laminae with a figure-of-eight suture, covers the thyrotomy repair with its umbrella. Tightly secured, the keel prevents stenosis and the migration of granulation tissue into the larynx.

The keel is made of soft implant grade silicone (clear or radiopaque) and is available in three sizes.

Indications for use

Repair of anterior glottic stenosis.

Formation of a sharp anterior commissure following laryngeal stent removal.

Prevention of stenosis following hemilaryngectomy.

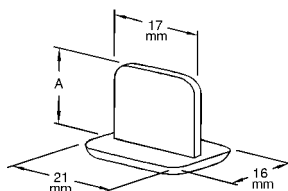
Supplied

Sterile
1 keel



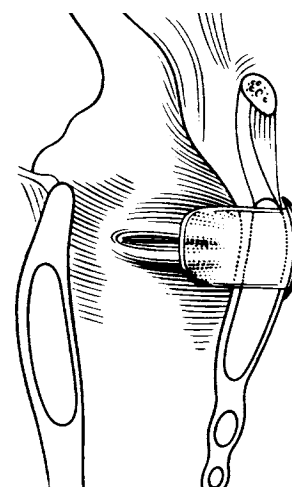
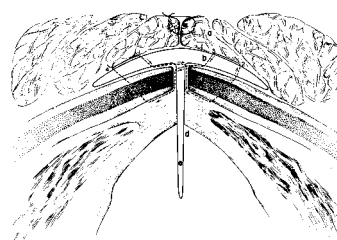
FEATURES

- Implant grade silicone
- Non-adherent smooth surface
- Available in clear or radiopaque material



Dimensions & Product Codes

SIZE	REF		Dimensions (mm)
	clear	radiopaque	
12	323040	323040R	12
14	323050	323050R	14
16	323060	323060R	16





MONTGOMERY® SALIVARY BYPASS TUBE

Description

The Montgomery® Salivary Bypass Tube may be used to stent repair of cervical esophageal and hypopharyngeal strictures or to facilitate the management of fistulae resulting from a variety of causes including advanced malignancy, surgery, radiation, trauma, and caustic ingestion. The constant bathing by saliva to the tissues altered by surgery, infection, or radiation therapy is a prime factor in retarding the progress of healing and fistula closure.

The Montgomery® Salivary Bypass Tube directs the saliva into the distal esophagus and allows for spontaneous closure of the fistula, or at least permits the tissue to recover sufficiently to be an improved recipient for more formidable measures such as repair using pedicled skin flap tissue. A feeding tube may be inserted through the salivary bypass tube. Impending fistulae and strictures may be prevented by tube placement alone or following bougienage dilation.

Indications for use

Repair of cervical esophageal and hypopharyngeal strictures.
Management of esophageal and hypopharyngeal fistulae.

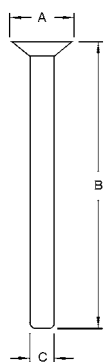
Supplied

Sterile
1 tube



FEATURES

- Implant grade silicone
- Non-adherent smooth surface
- Available in clear or radiopaque material



Dimensions & Product Codes

SIZE	REF		Dimensions (mm)		
	clear	radiopaque	A	B	C
8	322080	322080R	34	191	8
10	322100	322100R	36	191	10
12	322120	322120R	38	191	12
14	322140	322140R	40	191	14
16	322160	322160R	42	191	16
18	322180	322180R	44	191	18
20	322200	322200R	46	191	20

LARYNGEAL AND ESOPHAGEAL PRODUCTS



HAR-EL PHARYNGEAL TUBE

Description

The Har-El Pharyngeal Salivary Bypass Tube allows the surgeon to handle a wider variety of indications for treatment of esophageal fistulae. The tube features a unique superior funnel shape designed for anchoring at the level of the tongue base.

The tube has applications for: 1) the treatment of orocutaneous and pharyngocutaneous fistulae following head and neck oncologic resection, 2) placement in patients with an existing fistula prior to reconstructive procedures, and, 3) prophylactic placement in patients who are at high risk for development of a fistula.

Indications for use

Treatment of esophageal fistulae.

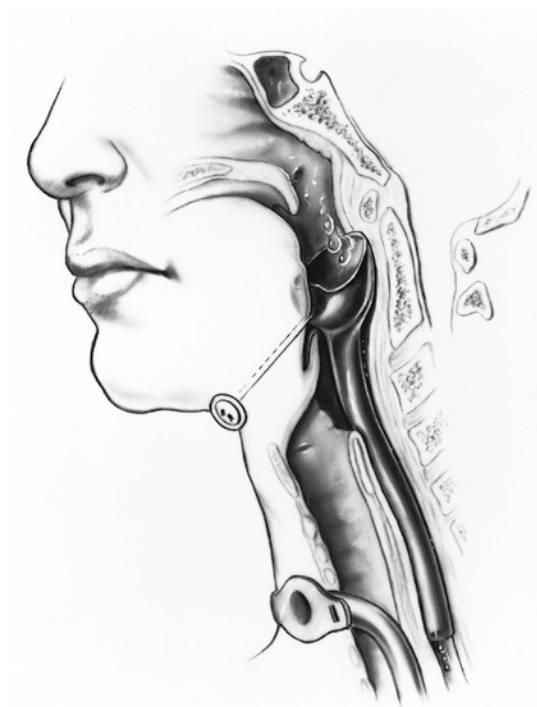
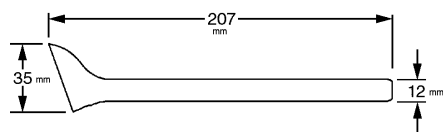
Supplied

Sterile
1 tube



FEATURES

- Implant grade silicone
- Non-adherent smooth surface
- Available in clear or radiopaque material



Product Codes

SIZE	REF	
	clear	radiopaque
12	355120	355120R

LARYNGEAL AND ESOPHAGEAL PRODUCTS



MONTGOMERY® ESOPHAGEAL TUBE

Description

The Montgomery® Esophageal Tube is used to bridge the gap between the pharyngostome and esophagostome following laryngoesophagectomy and first stage reconstruction of the cervical esophagus. The tube features a funnel-shaped superior end to conform to the hypopharynx, and two firm oval bands designed to ensure proper positioning and to prevent leakage of saliva after laryngoesophagectomy.

The Montgomery® Esophageal Tube has three functions: 1) it tends to eliminate the problem of profuse salivary leakage by way of the pharyngostome, 2) it maintains a widely patent pharyngostome and esophagostome, and, 3) it creates a trough between the pharyngostome and esophagostome facilitating the second stage procedure.

Indications for use

For two-stage reconstruction of the cervical esophagus.

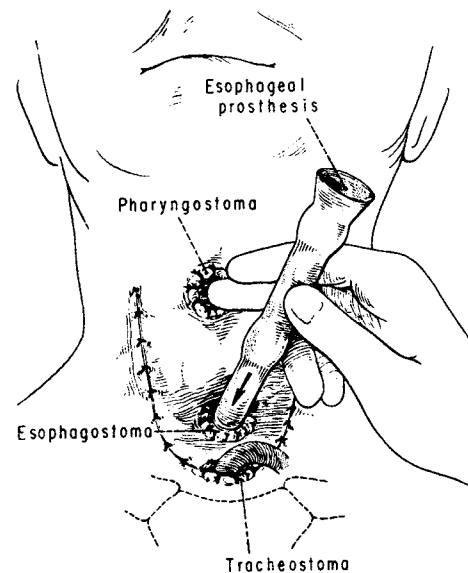
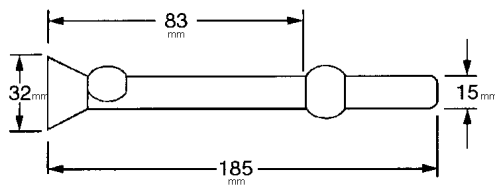
Supplied

Sterile
1 tube



FEATURES

- Implant grade silicone
- Non-adherent smooth surface
- Available in clear or radiopaque material



Product Codes

REF	
clear	radiopaque
322000	322000R

PROFESSIONAL REFERENCES



Montgomery, WW: Plastic Esophageal Tube. *Annals of Otolaryngology, Rhinology & Laryngology*, Vol 64, pp. 418-421, Jun 1955.

Montgomery, WW: Reconstruction of the Cervical Esophagus. *Archives of Otolaryngology*, Vol 77, pp. 609-620, Jun 1963.

Montgomery, WW: The Surgical Management of Supraglottic and Subglottic Stenosis. *Annals of Otolaryngology, Rhinology & Laryngology*, Vol 77, pp. 534-546, Jun 1968.

Montgomery, WW: SURGERY OF THE UPPER RESPIRATORY SYSTEM, Volume 1. Lea & Febiger, Philadelphia, 1971.

Montgomery, WW: Reconstructive Surgery for Laryngeal and Tracheal Stenosis. *The First International Symposium on Plastic and Reconstructive Surgery of the Face and Neck*. Verlag, Germany, 1972.

Montgomery WW: SURGERY OF THE UPPER RESPIRATORY SYSTEM, Volume II. Lea & Febiger, Philadelphia, 1973.

Montgomery, WW: Posterior and Complete Laryngeal (Glottic) Stenosis. *Archives of Otolaryngology*, Vol 98, pp. 170-175, 1973.

Montgomery, WW: Salivary Bypass Tube. *Annals of Otolaryngology, Rhinology & Laryngology*, Vol 87 (2), pp. 159-162, 1978.

Montgomery, WW: SURGERY OF THE UPPER RESPIRATORY SYSTEM, Volume 1, 2nd Edition. Lea & Febiger, Philadelphia, 1979.

Montgomery, WW: Management of Glottic Stenosis. *Otolaryngologic Clinics of North America*, Vol 12, pp. 841-847, 1979.

Montgomery, WW: Subglottic stenosis. *INTERNATIONAL SURGERY*, Cervese, Editor, Piccin Medical Books, Vol 67, pp. 199-207, 1982.

Montgomery, WW: Chronic Subglottic Stenosis, in *Otolaryngologic Clinics of N.A., THE LARYNX*. (Fried, Ed.) W.B. Saunders Co., Philadelphia, Vol 17 (1), pp. 107-113, Feb 1984.

Jacobs, EE, Montgomery, WW and

Lavelle, WG: Acute Laryngeal Trauma. *PROCEEDINGS: XIII WORLD CONGRESS OF OTORHINOLARYNGOLOGY*, Elsevier Publications, The Netherlands, 1985.

Montgomery, WW: Current Modifications of the Salivary Bypass Tube and Tracheal T-Tube. *Annals of Otolaryngology, Rhinology & Laryngology*, Vol 95 (2), pp. 121-125, Mar/Apr 1986.

Montgomery, WW and Montgomery SK: Manual For Use of Montgomery Laryngeal, Tracheal and Esophageal Prostheses. *Annals of Otolaryngology, Rhinology & Laryngology*, Supp 125, Jul-Aug 1986.

Schuller, DE and Parrish, RT: Reconstruction of the Larynx and Trachea. *Archives of Otolaryngology, Head and Neck Surgery*, Vol 114, pp. 278-286, March 1988.

Montgomery, WW: SURGERY OF THE UPPER RESPIRATORY SYSTEM, Volume 2, 2nd Edition. Lea & Febiger, Philadelphia, 1989.

Montgomery, WW and Montgomery SK: Manual For Use of Montgomery Laryngeal, Tracheal and Esophageal Prostheses: Update 1990. *Annals of Otolaryngology, Rhinology & Laryngology*, Vol 99 (9), Supp 150, Sep 1990.

Wenig, BL, Schild, JA, and Mafee, MF: Epiglottic Laryngoplasty for Repair of Blunt Laryngopharyngeal Trauma. *Annals of Otolaryngology, Rhinology & Laryngology*, Vol 99 (9), pp. 709-713, Sep 1990.

Thedinger, BA, Cheney, ML, Montgomery, WW, and Goodman, M: Leiomyosarcoma of the Trachea. *Annals of Otolaryngology, Rhinology & Laryngology*, Vol 100 (4), pp. 337-340, Apr 1991.

Schaefer, SD: The Acute Management of External Laryngeal Trauma. *Archives of Otolaryngology - Head & Neck Surgery*, Vol 118, pp. 598-604, June 1992.

Zalzal, GH: Stenting for Pediatric Laryngotracheal Stenosis. *Annals of Otolaryngology, Rhinology & Laryngology*, Vol 101 (8), pp. 651-655, Aug 1992.

Friedman, M: Avoiding Complications with the Use of Stents for Laryngotracheal Reconstruction. *Operative Techniques in Otolaryngology - Head and Neck Surgery*, Vol 3, No 3, pp. 206-207, Sep 1992.

Har-El, G, et al: The Use of Salivary Bypass for Pharyngeal Reconstruction. *Laryngoscope*, Vol 102, pp. 1073-1075, Sept 1992.

Lichtenberger, G and Toohill, RJ: New Keel Fixing Technique for Endoscopic Repair of Anterior Commissure Webs. *Laryngoscope*, Vol 104, pp. 771-774, June 1994.

Spinelli, P, et al: Treatment of Nondilatable Malignant Pharyngoesophageal Strictures by Montgomery Salivary Bypass Tube: A New Approach. *Gastrointestinal Endoscopy*, Vol 41, No. 6, pp. 601-603, Jun 1995.

Leon, et al: Montgomery Salivary Bypass Tube in the Reconstruction of the Hypopharynx, Cost-Benefit Study. *Annals of Otolaryngology, Rhinology & Laryngology*, Vol 108 (9), pp. 864-868, Sept 1999.

Varvares, MA, et al: Use of the Radial Forearm Fasciocutaneous Free Flap and Montgomery Salivary Bypass Tube for Pharyngoesophageal Reconstruction. *Head and Neck*, pp. 463-468, August 2000.

Spriano, G, et al: Hypopharyngeal Reconstruction Using Pectoralis Major Myocutaneous Flap and Pre-Vertebral Fascia. *Laryngoscope*, Vol 111, pp. 544-547, March 2001.

Amin, MR and Koufman, JA: Hemicoideotomy for Voice Rehabilitation Following Hemilaryngectomy with Ipsilateral Arytenoid Removal. *Annals of Otolaryngology, Rhinology and Laryngology*, Vol 110, pp. 514-518, 2001.

Montgomery, WW, et al: Surgery of the Larynx, Trachea, Esophagus, and Neck. W.B. Saunders, Philadelphia, 2002.

To place an order

Our Customer Representatives are available from 8:30 a.m. to 5:00 p.m. (EST) Monday through Friday. Orders can also be placed through our 24-hour fax line, 508-898-2373.

- Customer Service: 800-433-2674 (toll-free in the U.S. and Canada)
- Main Telephone: 508-898-9300
- 24-hour-Fax: 508-898-2373

Shipment

- Standard shipping within the U.S. is FedEx two-day delivery.
- Express orders are accepted until 3:00 p.m. (EST) for next business day delivery nationwide.
- Most orders are shipped the same day.
- Saturday delivery is available in many areas.

Warranty

Boston Medical Products, Inc. warrants that reasonable care has been used in the manufacturing of all products. All products are warranted to be free of defects at the time of shipment. For specific product warranties, please refer to individual product instructions for use.

Return policy

Boston Medical Products, Inc. will accept returned items that are unopened in the original packaging.

- Please call Customer Service to obtain a Return Authorization.
- Returns accepted within 30 days from invoice date.
- A Return Authorization is required for all returns.
- All returns are subject to a restocking fee.
- Merchandise credit only.



Boston Medical Products, Inc.
117 Flanders Road, Westborough, MA 01581 USA
T: 508.898.9300 • F: 508.898.2373
www.bosmed.com • info@bosmed.com

